

welcome to
IHHC



IHHC NATIONAL SEMINAR

NSW Branch

Plus Breaking News in State-wide Matters

An Introduction to the UK Framework of Meals in the
Community and Care Services

22nd March, 2010

EDUCATION & CONFERENCE CENTRE MACQUARIE (NSEC)
Wicks Road, North Ryde (in the grounds of Macquarie Hospital)
Telephone: (02) 9887 5701 or 0402894699



THE NATIONAL SEMINAR WILL BE PRESENTED FROM THE 22ND MARCH TO THE 30TH MARCH 2010 IN 5 STATES

IHHC COMMITMENT

The IHHC has a commitment to provide members and associates with ongoing educational and information updates via a range of relevant topics from local and international sources.

NATIONAL SEMINARS— A LOCAL AND INTERNATIONAL FLAVOR!

Whilst on a recent visit to England, a number of IHHC Board Members visited the Haringey Community Meals Service, a Drop In Centre and a Care Home within the London Borough.

The service acknowledged strong links with the National Health Service (NHS) to provide a more holistic care approach. The extreme climate and increasing trend of elderly citizens living alone underpinned the need for a more flexible approach to both meal provision, meal availability and general patient care plans.

The multifaceted community service demonstrated values of service, integrity, improvement and passion via strong community relationships and regular customer feedback. The parallels of NHS and Australian Health System with evolving early discharge programs, ongoing follow-up with aged recipients suffering from a range of age related illnesses and provision of culturally nutritious meals assists with the circle of care.

The passion and commitment to the meals service will be shared by Era Varellas, Contract Manager, Haringey Community Meals (UK) and Neel Radia, the South East Chair of the National Association of Care Catering (UK) who have kindly agreed to make the trek 'down under'!

STATEWIDE BREAKING NEWS

Each state will present speakers to cover topics that are considered 'breaking news' to ensure members are kept abreast of the latest trends, information and available standards.

NATIONAL DATES AND VENUES

Sydney - Monday 22nd March, 2010

Education and Conference Centre,
Macquarie (NSEC) Wicks Road, North Ryde

Brisbane - Tuesday 23rd March, 2010

The Ship Inn, Cnr Stanley & Sidon Streets,
South Bank Parklands

Adelaide - Wednesday 24th March, 2010

AAMI Stadium Function Complex,
Magarey Room, AAMI Stadium, Turner Drive,
West Lakes

Hobart - Friday, 26th March 2010

Hotel Grand Chancellor,
1 Davey Street, Hobart

Launceston - Monday, 29th March, 2010

Country Club Villas,
Country Club Avenue, Prospect

Melbourne - Tuesday, 30th March, 2010

The Committee Room, Flemington Racecourse "The Event Centre", 448 Epsom Road, Flemington



09.00-10.00	Registration and Morning Coffee
10.00-11.00	International Presentations
	An Introduction to the UK Framework of Meals in the Community and Care Services
	Overview of the NACC and work we are currently doing as an Association in the UK
	Presenter Neel Radia, South East Regional Chair, National Association of Care Caterers (NACC), UK
	Overview of London Borough of Haringey and the services they offer to their service users
	Presenter Era Varellas, Contract Manager for Catering, Haringey Council, UK
	The presentation will cover the following topics: <ul style="list-style-type: none"> • A look into the geographical trends in the UK including how meal services are funded • In-house Catering V's Contract Catering Pro's and Con's • Ethnic Meal trends in the UK and how the UK provides this service to its users • What next for Community Meals in the UK? • General outline of NHS Catering Services in the UK • Question time
11.00-11.30	Morning Tea
	International Presentations continue, Question and Answers
12.30-13.30	Lunch Break
13.30-14.00	Statewide Matters
	NSW Shared Services
	An update on the progress in Shared Business Services and the transition of food & linen services
	Presenter Carmen Rechbauer Manager Shared Business Services, Health Support Services (Food and Linen Services)
14.00-14.45	NSW Health, 'Nutrition Standards for Adult Inpatient Menus'
	This presentation will describe the development and content of the new NSW Health Nutrition Standards for adult inpatient menus, that include both nutrition goals and minimum menu choice standards. It will also describe the ongoing process to develop the next set of standards for therapeutic diets.
	Presenter Dr Peter Williams Associate Professor of Nutrition and Dietetics, University of Wollongong
14.45-15.15	Initiatives in Reducing the Ecological Impact of Healthcare Facilities
	This presentation will discuss the Federal Government's Carbon Reduction Scheme (CPRS) and the National Greenhouse and energy reporting scheme (NGERS). Simon will also discuss systems for healthcare, electricity usage, the generation of waste and in particular the opportunities that exist for organic materials that were once land-filled now being able to be processed into reusable product.
	Presenter Simon Gardner Lee General Manager, Marketing & Strategy, SITA Environmental Solutions
15.15	Seminar closes

INTERNATIONAL SPEAKERS



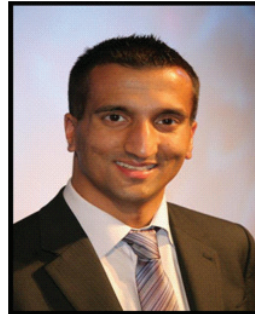
ERA VARELLAS

Era Varellas is the Contract Manager for Catering in the London Borough of Haringey.

Era has spent a lifetime in the catering world and for the past 26 years has worked in public sector catering.

Her passion to ensure that the most vulnerable people have access to a daily hot meal has seen her working in Haringey Council's Education and Social Services Departments in a number of posts including operations and contract management of school meals, staff catering and latterly Community Meals.

She is an active member of the National Association of Care Catering (NACC) and was chair of the South East region between 2004 and 2007.



NEEL RADIA

Neel Radia is the South East Regional Chair for the National Association of Care Caterers (NACC).

This is Neel's 3rd year as the South East Regional Chair and as part of his role provides a forum for debate amongst his membership around catering in the care sector enabling members to facilitate the exchange of information, experience and expertise.

Other associations Neel is involved in include, The Institute of Hospitality (IOH) and Hospital Caterers Association (HCA). Neel has extensive knowledge around the Ethnic meal market in the UK where he works for Raj Foods who manufacture meals for the health and care sector.

STATEWIDE MATTERS SPEAKERS

DR PETER WILLIAMS

Peter is an Associate Professor in the School of Health Sciences at the University of Wollongong and a Board member of Food Standards Australia New Zealand. Before his employment at Wollongong, Peter was the Director of Scientific and Consumer Affairs at Kellogg's for three years, and previously worked as the Chief Dietitian and Food Services Manager at Royal Prince Alfred Hospital. Peter is a Fellow of the Dietitians Association of Australia and served a two year term as President from 2001. He has served on NHMRC working parties for the review of Dietary Guidelines for Australia and the review of Nutrient Reference Values, and is a member of the steering committee for the Heart Foundations' Pick the Tick program. He has just completed a consultancy project with the NSW Department of Health to help develop Nutrition Standards for Adult Hospital Inpatients.

CARMEN RECHBAUER

Carmen has worked in Health for 15 years and is currently the Manager, Shared Business Services (Linen & Food Services). Prior to working in Health Carmen worked for the private sector in the services industry including working for herself. The IHHC is grateful for Carmen's ongoing commitment, enthusiasm and availability to provide member information updates at regular seminars.

SIMON GARDNER LEE

Simon Gardner Lee leads SITA's new marketing and strategy department. Simon Lee has over 10 year's expertise in the Advanced Waste Treatment Field and three years in a business and technical support role, and also represents SITA on WMAA committees and industry forums.

TAX INVOICE: ABN: 64 005 887 570

Please note that it is essential for all participants to send in a completed registration form together with payment of registration fees.

REGISTER ONLINE www.ihhc.org.au

FAX OR POST

Please complete this form and send to the IHHC National Secretariat, CLEMS on FAX 03 9416 0636 or POST to the IHHC National Secretariat, CLEMS, Suite 5, 250 Gore Street, Fitzroy Vic 3065.

REGISTRATION FEES (Inc.GST)

IHHC Member - \$99.00 Online Registration

Non Member - \$125.00 Online Registration

IHHC Member Cheque/EFT - \$115.00

IHHC Non Member Cheque/EFT - \$140.00

**REGISTER NOW
BY 12TH MARCH 2010**

PERSONAL INFORMATION

Name

Position

Organisation.....

Address

Suburb/City State Postcode

Telephone Fax..... Mobile

Email Special Needs/Dietary Requirements

CANCELLATION & REFUND POLICY

Cancellations must be notified in writing to the IHHC National Secretariat. After Tuesday 16 March 2010 a cancellation fee of \$25.00 applies. A substitute delegate is welcome to attend. Name of substitute must be provided 2 days before the seminar.

PAYMENT METHODS

Cheques - please make cheque payable to IHHC and send to the National Secretariat, CLEMS (Conference Links & Event Management Services) Suite 5, 250 Gore Street, Fitzroy Vic 3065.

EFT payments – Account Name: IHHC BSB: 083 232 Account No: 159171012

CREDIT CARDS ACCEPTED Visa / Mastercard.

Cardholder Name

Card Number

Expiry Date Cardholder's Signature Amount \$.....



CONTACT US

IHHC National Secretariat
CLEMS (Conference Links & Event Management Services)
Suite 5, 250 Gore Street, Fitzroy Vic 3065

Tel: 03 9416 3833
Fax: 03 9416 0636
Email: ihhc@clems.com.au